

NYCRUNS Brooklyn Experience Half Marathon



USATF Certificate

NY25001MNS
Effective: 04/07/2025
Through: 12/31/2035



START: [40.723977, -73.950967](#)

On Manhattan Ave, N of Nassau Ave. Even with the N edge of the light pole (L.P.)/traffic signal/street sign at the SW corner of the intersection with Bedford Ave. 8'10" past (N of) the N edge of the northernmost of the three metal subway ventilation grates on the W side of the road. See Start Detail Diagram.

COURSE RESTRICTIONS: (must be delineated)

- * Wide turn from Kent Ave onto Williamsburg St W (see Detail A)
- * Runners may not use bike lanes on Williamsburg, Flushing, and Navy
- * Wide turn from Front St onto Old Fulton St (see Detail B)
- * S-bound lanes only on Old Fulton St and Cadman Plaza W until center median ends at Montague St
- * S-bound lanes only on Flatbush Ave between Fulton St and the N edge of the stop line on the N side of the intersection with St. John's Pl
- * W-bound lanes only (including yellow buffer zones) while running E on Eastern Pkwy (approaching the Turnaround)
- * E-bound lanes only (including yellow buffer zones) while running W on Eastern Pkwy (after the Turnaround)
- * S-bound lanes only (including yellow buffer zones) on Ocean Ave
- * Runners are restricted to the rec lane (on runners' left) and the center lane on East Dr and West Dr in Prospect Park (left 2 lanes, see Detail D)

TURNAROUND:

[40.669959, -73.952480](#) | On Eastern Pkwy, between Rogers Ave and Nostrand Ave. MagNail in the center of the road is 73'10" SE of (measured directly) the closest edge of the base for L.P. #B027549 on the N side of the road. MagNail is 38 feet NE of (measured directly) the closest edge of the base for L.P. #B027582 on the S side of the road. Said L.P. has a green sign attached reading "Nostrand Ave Next Signal". See T/A Detail.

21.0975 km | Brooklyn, NY

Measured by Matthew Slocum
1 March 2025 and 22 March 2025
and
James Gusmer + Matthew Slocum
26 March 2025

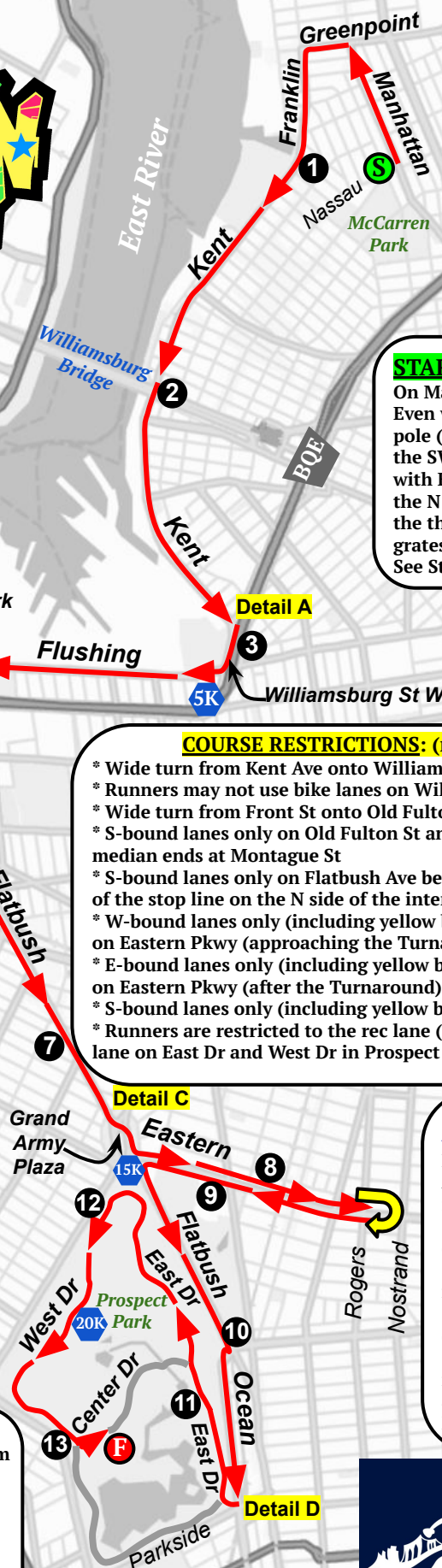
matt@precisioncoursedesign.com

Except as noted, this course was measured using the full width of the road and the shortest possible route.

See supplemental pages for Start/Finish/Turnaround Detail Diagrams, Supplemental Detail Diagrams A-D, intermediate splits, and course narrative

FINISH: [40.658767, -73.971920](#)

On Center Dr, shortly after the turn from West Dr. MagNail in the center of the road is 24'10" W of (measured directly) the closest edge of the first L.P. past the first asphalt path on the runners' right. MagNail is 85'5" SW of (measured directly) the closest edge of the black fire hydrant (also on the runners' right). See Finish Detail Diagram.



NYCRUNS

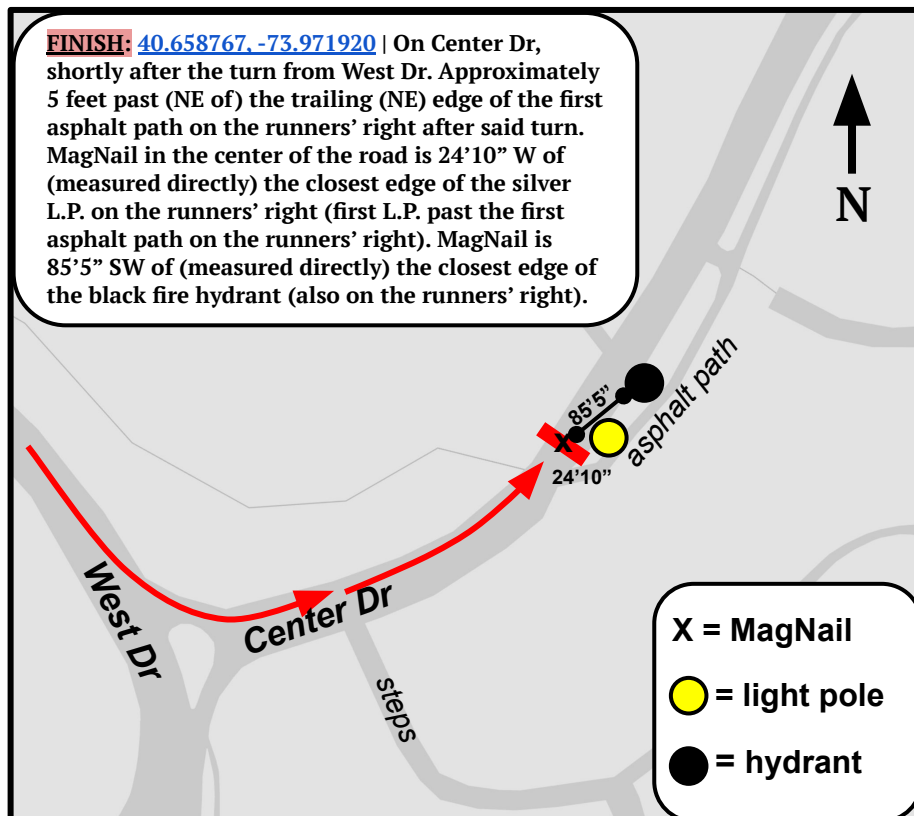
WIN YOUR RACE

START: [40.723977, -73.950967](#)

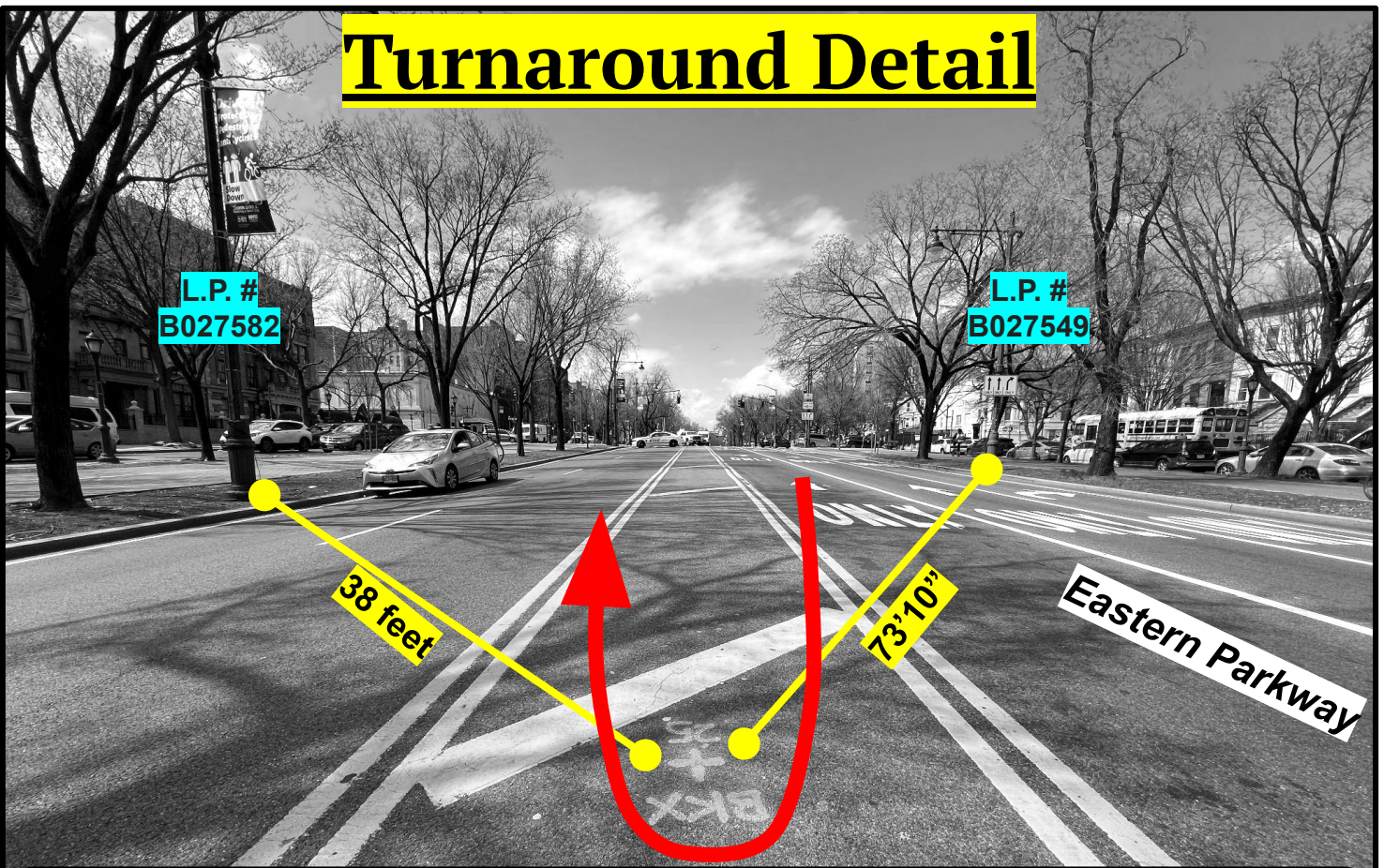
On Manhattan Ave, N of Nassau Ave.
Even with the N edge of the light pole/traffic signal/street sign at the SW corner of the intersection with Bedford Ave. 8'10" past (N of) the N edge of the northernmost of the three metal subway ventilation grates on the W side of Manhattan Ave at the SW corner of said intersection.



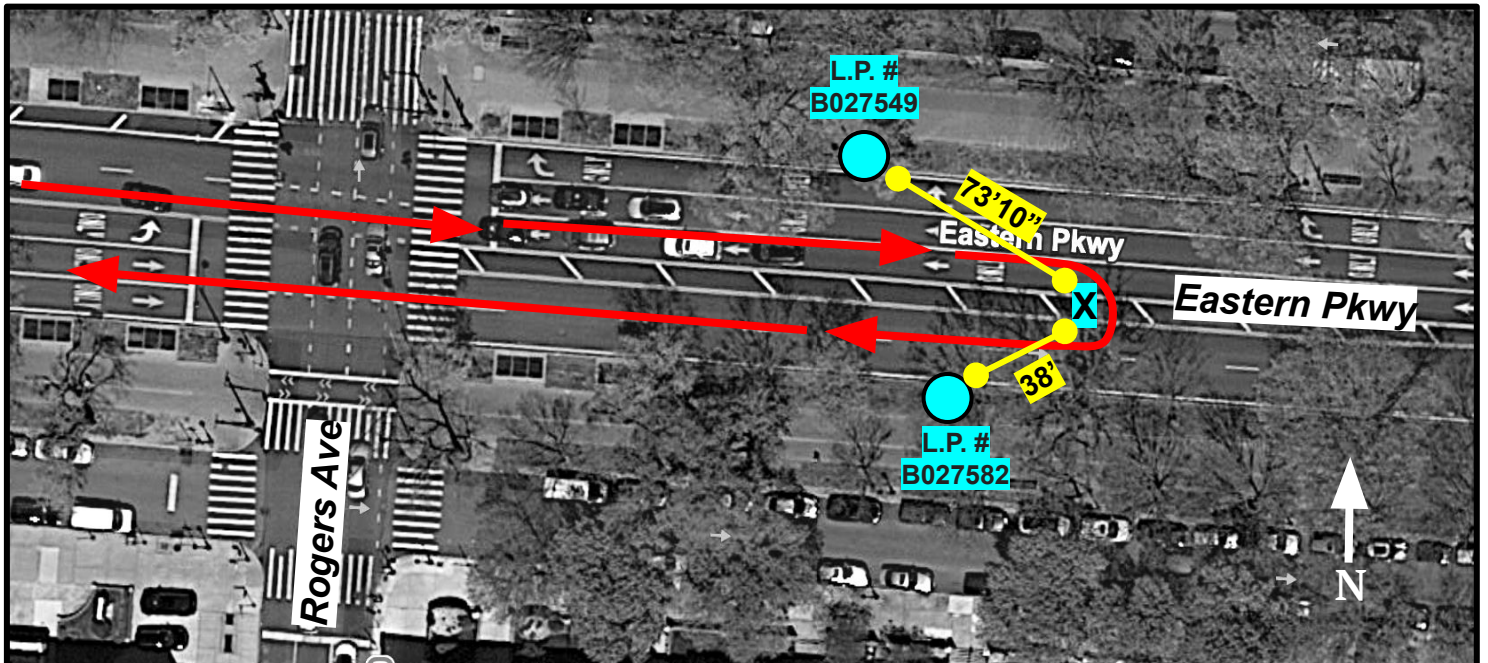
FINISH: [40.658767, -73.971920](#) | On Center Dr, shortly after the turn from West Dr. Approximately 5 feet past (NE of) the trailing (NE) edge of the first asphalt path on the runners' right after said turn. MagNail in the center of the road is 24'10" W of (measured directly) the closest edge of the silver L.P. on the runners' right (first L.P. past the first asphalt path on the runners' right). MagNail is 85'5" SW of (measured directly) the closest edge of the black fire hydrant (also on the runners' right).



Turnaround Detail



TURNAROUND: [40.669959, -73.952480](#) | On Eastern Pkwy, between Rogers Ave and Nostrand Ave. Marked with MagNail and turquoise paint in the center of the road (also dashes on the curb on both sides of the road). MagNail is 73'10" SE of (measured directly) the closest edge of the base for light pole (L.P.) #B027549 (small #s on the metal strip) on the N side of Eastern Pkwy. L.P. #B027549 has a black-and-white sign affixed to it with directional arrows indicating "Right Turn Only" and "Straight Only". MagNail is 38 feet NE of (measured directly) the closest edge of the base for L.P. #B027582 (small #s on the metal strip) on the S side of Eastern Pkwy. L.P. #B027582 has a green sign affixed to it reading "Nostrand Ave | Next Signal".

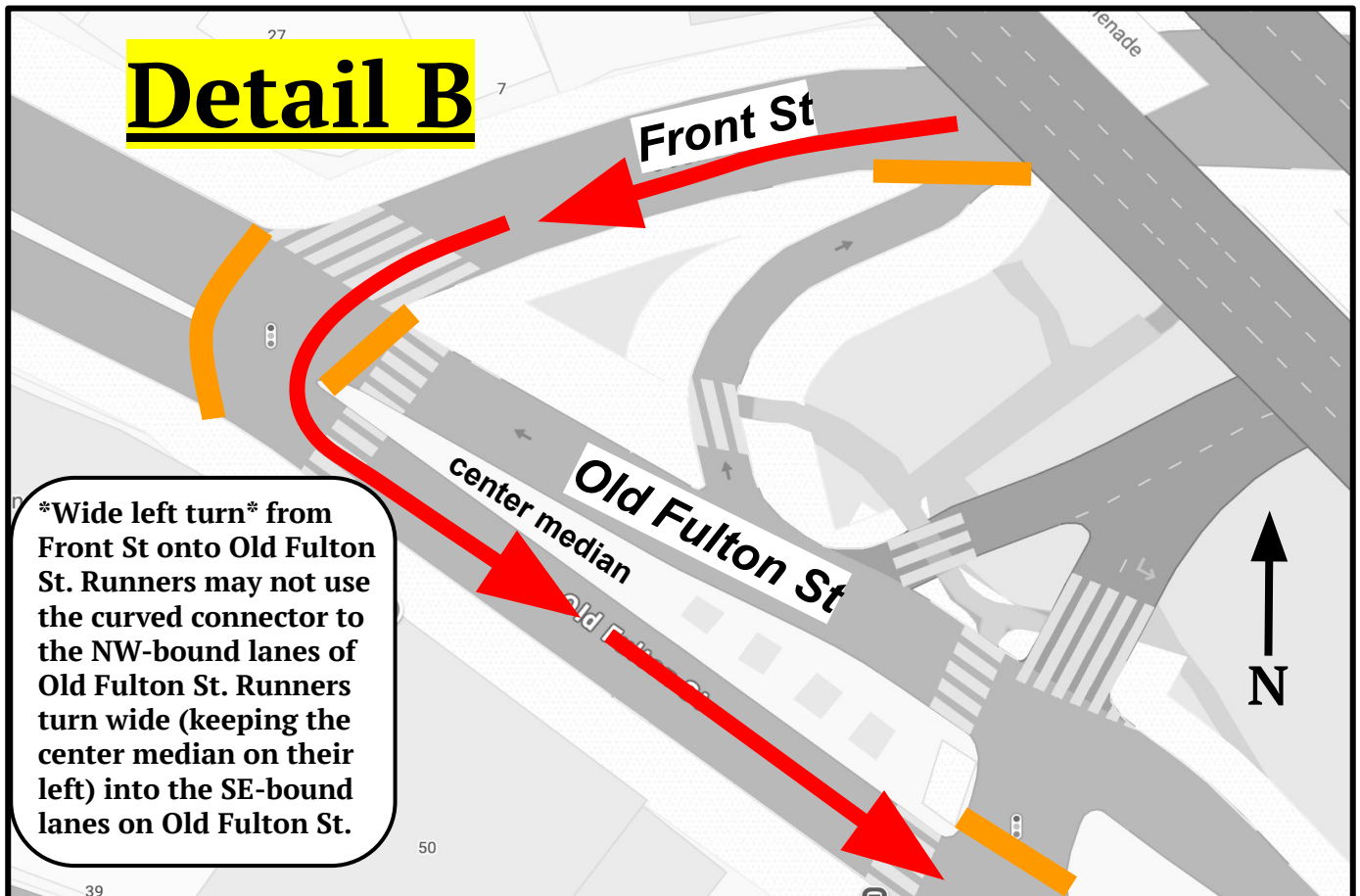
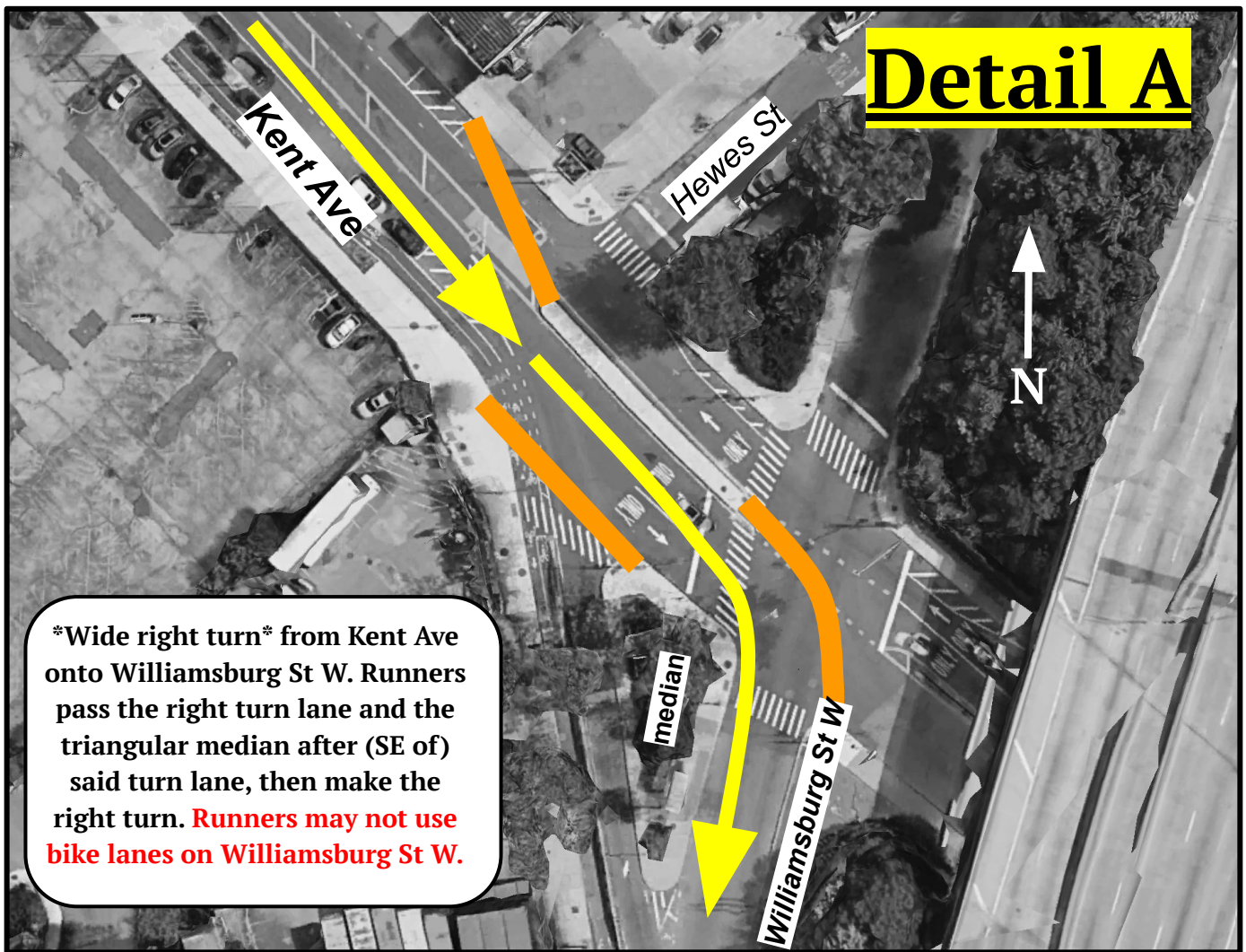


NYCRUNS Brooklyn Experience Half Marathon

Turn by Turn

- Start running N on Manhattan Ave (see Start Detail)
- Left onto Greenpoint Ave
- Left onto Franklin St
- Franklin St becomes Kent Ave
- *Wide right* onto Williamsburg St W (see Detail A): runners pass the right turn lane and the triangular median after (SE of) said turn lane, then make the right turn. Runners may not use the bike lanes on Williamsburg St W.
- Right onto Flushing Ave (runners may not use the bike lane on Flushing Ave once the curbed median begins (almost immediately))
- Right onto Navy St (runners may not use the bike lane on Navy St once the curbed median begins (almost immediately))
- Left onto York St
- Right onto Gold St
- Left onto Front St
- *Wide left* onto Old Fulton St (see Detail B). Runners may not use the curved connector to the NW-bound lanes of Old Fulton St. Runners turn wide into the SE-bound lanes.
- Old Fulton St becomes Cadman Plz W. S-bound lanes only on Old Fulton St and Cadman Plz W until the center median ends at Montague St (and Cadman Plz W becomes Court St)
- Left onto Joralemon St (**runners may use the shortest possible route to make the turn via the curved turn lane**)
- Joralemon St becomes Fulton St
- Right onto Flatbush Ave (S-bound lanes only on Flatbush Ave until the N edge of the stop line on Flatbush at the leading (N) edge of intersection with St. John's Place, see Detail C)
- Runners may transition into the N-bound lanes of Flatbush at said stop line, then bear left to follow Grand Army Plaza clockwise to the W-bound lanes of Eastern Pkwy (see Detail C)
- W-bound lanes only (including yellow buffer zones) while running E on Eastern Pkwy (approaching the Turnaround)
- Turnaround (see Turnaround Detail), then E-bound lanes only (including yellow buffer zones) on Eastern Pkwy while running W (after the Turnaround)
- Left onto Flatbush Ave (full width/shortest possible route)
- Right onto Ocean Ave (S-bound lanes only)
- Right to enter Prospect Park at the SE entrance to the park (Ocean Ave/Parkside Ave)
- Runners follow the shortest possible route and may use the curved turn lane to turn right onto East Dr (see Detail D). Runners must then transition to the left two lanes on East Dr before reaching the first light pole on their right on East Dr (see Detail D).
- Follow the Prospect Park Loop counterclockwise via East Dr and West Dr (runners are restricted to the recreation lane (on runners' left) and the center lane on East Dr and West Dr in Prospect Park (i.e., left 2 lanes))
- Left from West Dr onto Center Dr to the Finish (see Finish Detail)

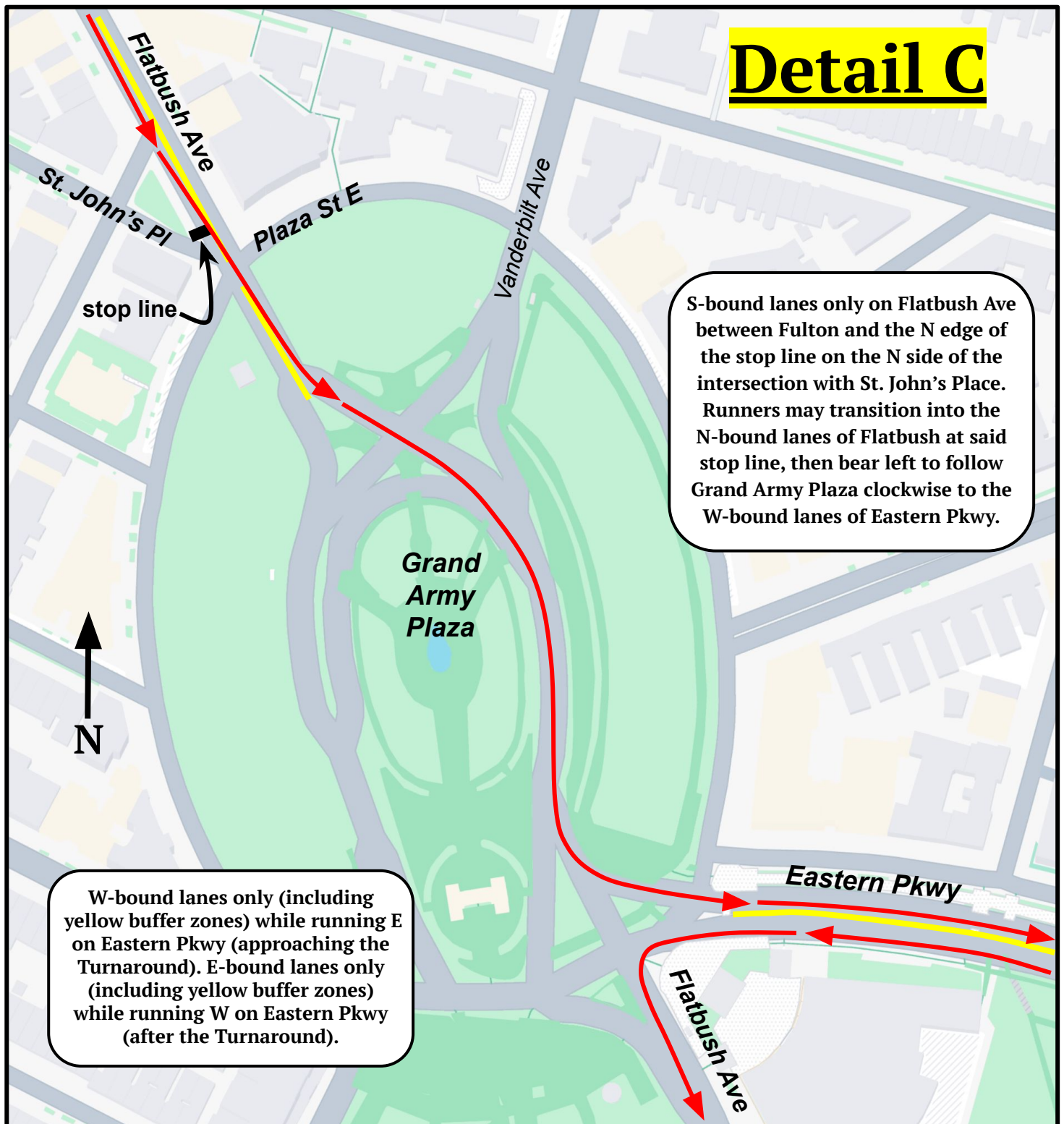
All Course Restrictions must be delineated

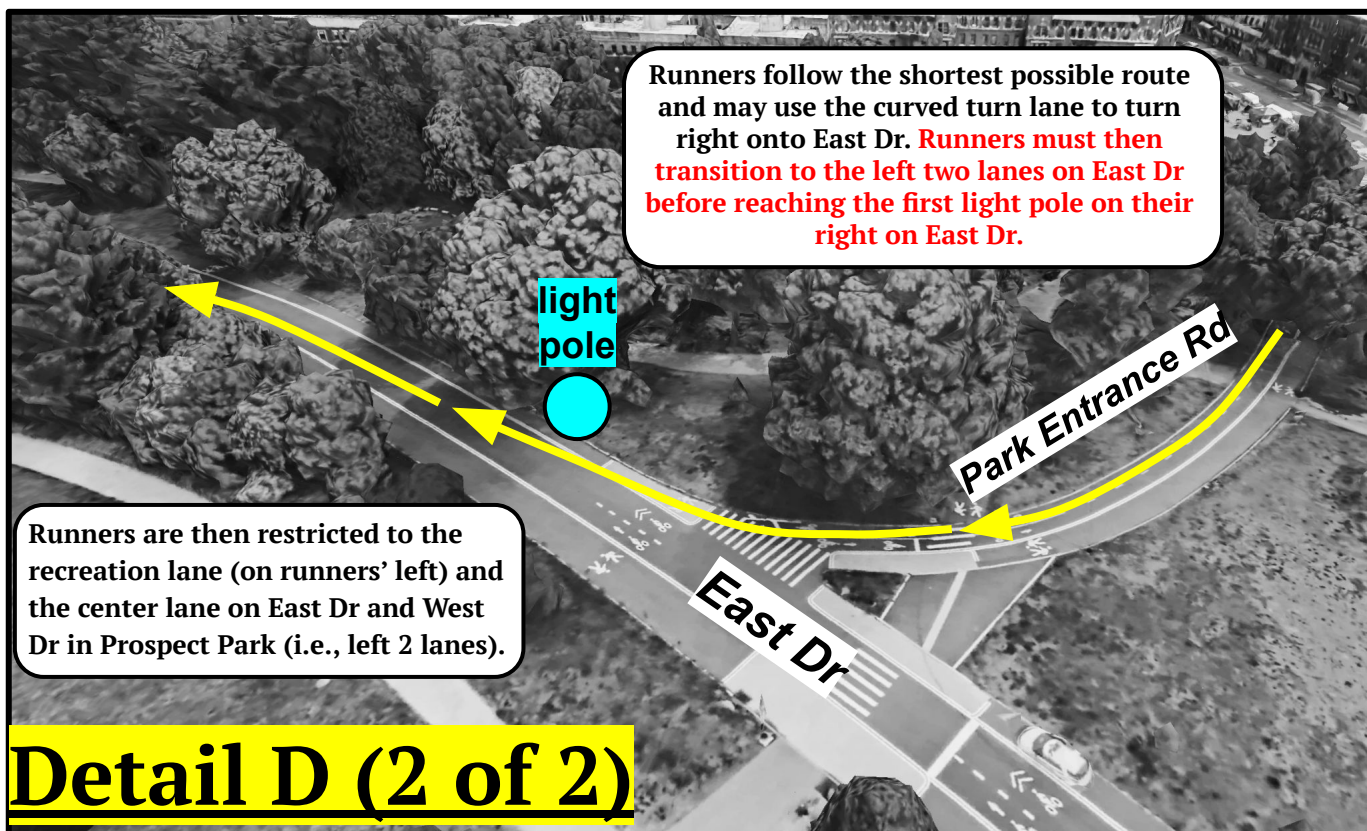
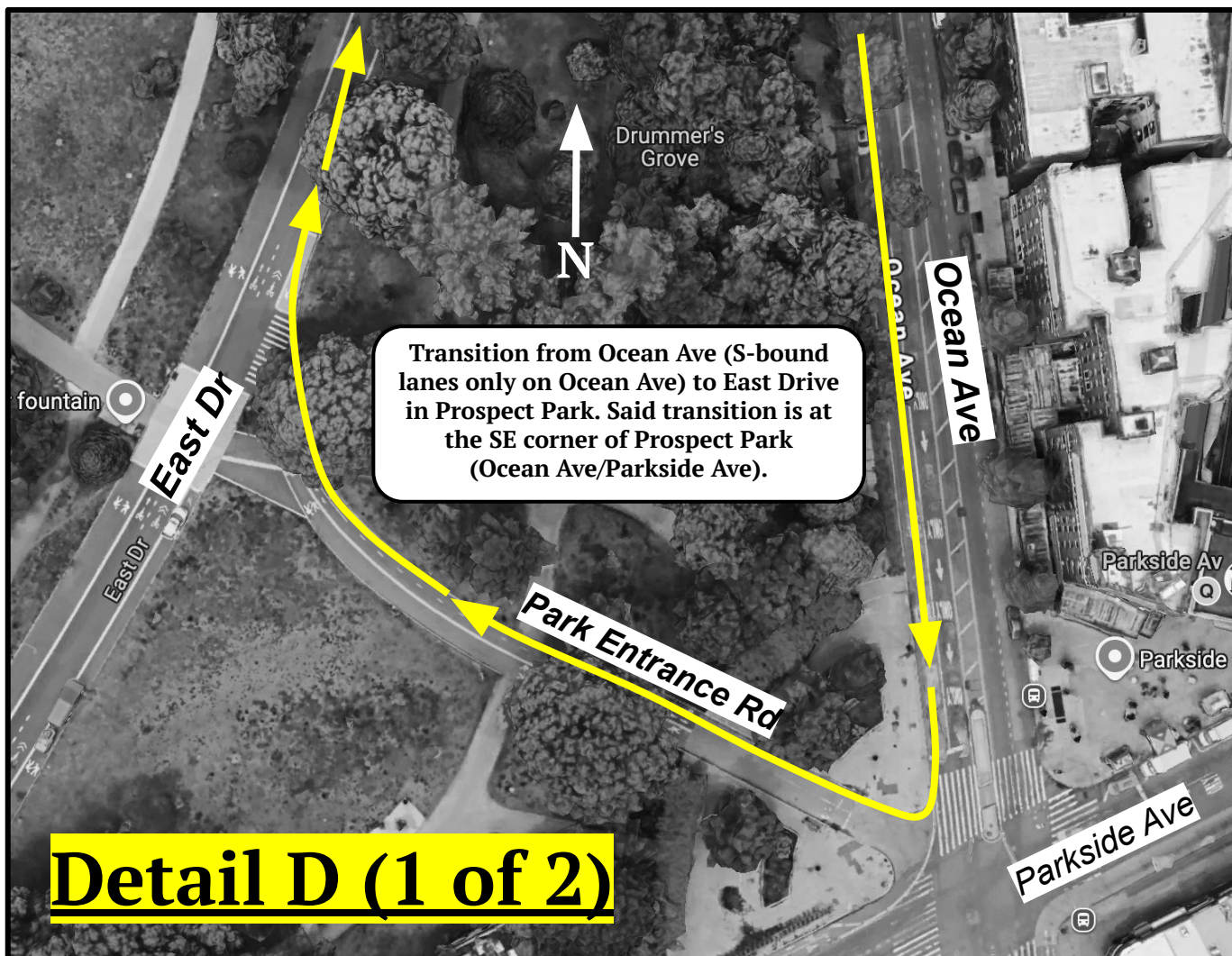


Detail C

S-bound lanes only on Flatbush Ave between Fulton and the N edge of the stop line on the N side of the intersection with St. John's Place. Runners may transition into the N-bound lanes of Flatbush at said stop line, then bear left to follow Grand Army Plaza clockwise to the W-bound lanes of Eastern Pkwy.

W-bound lanes only (including yellow buffer zones) while running E on Eastern Pkwy (approaching the Turnaround). E-bound lanes only (including yellow buffer zones) while running W on Eastern Pkwy (after the Turnaround).





NYCRUNS Brooklyn Experience Half Marathon

Intermediate Splits

START: [40.723977, -73.950967](#) | On Manhattan Ave, N of Nassau Ave. Even with the N edge of the light pole/traffic signal/street sign at the SW corner of the intersection with Bedford Ave. 8'10" past (N of) the N edge of the northernmost of the three metal subway ventilation grates on the W side of Manhattan Ave at the SW corner of said intersection. Please see the Start Detail Diagram.

Mile 1: [40.724443, -73.957720](#) | On Franklin St, just before (N of) the intersection with N 14th St. 26'2" past (S of) the trailing (S) edge of the storm drain on the runners' right, which is opposite the black fire hydrant. Six feet before (N of) the leading (N) edge of the Con Edison storm drain in the grass between the sidewalk and the curb (also on the runners' right).

Mile 2: [40.712376, -73.967814](#) | On Kent Ave, underneath the Williamsburg Bridge. Near the N side of the bridge. 38'10" before (N of) the only light pole (L.P.) on the runners' left underneath the bridge and 55'7" before the black fire hydrant (also on the runners' left).

Mile 3: [40.699557, -73.962409](#) | On Williamsburg St W, before (N of) the entrance to the Naval Cemetery Landscape. 13'8" before (N of) the leading (N) edge of the manhole cover on the runners' right (in the vehicular lanes). Said manhole cover is also roughly in line with the silver L.P. on the far right. Mile 3 is also even with the leading (N) edge of the Con Edison manhole cover in the bike lanes (on the other side of the concrete barriers). *Runners may not use bike lanes on Williamsburg St W*

5K: [40.698059, -73.963018](#) | On Flushing Ave, immediately after the turn from Williamsburg St W. 3'8" before (E of) the beginning (E edge) of the curbed median which divides the bike lanes and the traffic lanes. 12'2" past (W of) the center of the light pole/street sign/traffic signal on the NW side of said intersection. *Runners may not use bike lanes on Flushing Ave*

Mile 4: [40.698274, -73.979959](#) | On Flushing Ave, just before (E of) the turn onto Navy St. In front of #3 Flushing Ave, Suite 150 (currently City MD). 4'10" past (W of) the trailing (W) edge of the Con Edison manhole cover in the bike lane on the runners' right. 26 feet before (E of) the black fire hydrant (also on the runners' right). *Runners may not use bike lanes on Flushing Ave*

Mile 5: [40.701686, -73.992228](#) | On Old Fulton St, underneath the BQE overpass. 3'6" before (NW of) the leading (NW) edge of the metal utility box in the sidewalk on the runners' right.

Mile 6: [40.690455, -73.984919](#) | On Fulton St, just past (E of) the intersection with Hoyt St (on the runners' right). 29 feet past the traffic signal at the SE corner of said intersection.

10K: [40.689011, -73.981290](#) | On Fulton St, just before the right turn onto Flatbush Ave. 17'7" before (NW of) the leading (NW) edge of the storm drain on the runners' right and 47'4" before the center of the traffic signal on the SW corner of Flatbush and Fulton.

HALFWAY (10.54875 km / 6.554689 miles): [40.684727, -73.978084](#) | In the S-bound lanes of Flatbush Ave, across from Atlantic Terminal and near the leading (N) edge of Times Plaza (the triangle connecting Flatbush Ave, 4th Ave, and Atlantic Ave). In the crosswalk running across Flatbush at the trailing (S) side of the intersection with 4th Ave. 15 feet before (N of) the traffic signal on the runners' right on the S side of said intersection and 40'4" before the leading (N) edge of the storm drain (also on the runners' right).

Mile 7: [40.679068, -73.973910](#) | In the S-bound lanes of Flatbush Ave before (N of) Prospect Pl. 8'6" before the black fire hydrant on the runners' right. Said hydrant is just before (N of) #274 Flatbush Ave.

Mile 8: [40.671118, -73.959886](#) | In the W-bound lanes of Eastern Pkwy, between Classon Ave and Franklin Ave (i.e., before the Turnaround). 23 feet past (E of) the center of the entrance for building #263, which is on the runners' left (N side of the road).

TURNAROUND (13.51325 km / 8.396744 miles): [40.669959, -73.952480](#) | On Eastern Pkwy, between Rogers Ave and Nostrand Ave. In the center of the yellow buffer zone in the middle of the roadway. Marked with MagNail and turquoise paint in the center of the road (also dashes on the curb on both sides of the road). MagNail is 73'10" SE of (measured directly) the closest edge of the base for L.P. #B027549 (small #s on the metal strip) on the N side of Eastern Pkwy. L.P. #B027549 has a black-and-white sign affixed to it with directional arrows indicating "Right Turn Only" and "Straight Only". MagNail is 38 feet NE of (measured directly) the closest edge of the base for L.P. #B027582 (small #s on the metal strip) on the S side of Eastern Pkwy. L.P. #B027582 has a green sign affixed to it reading "Nostrand Ave | Next Signal". Please see the Turnaround Detail Diagrams.

Mile 9: [40.671791, -73.963700](#) | In the E-bound lanes of Eastern Pkwy, after the Turnaround. Just past (W of) the westernmost vertical pillar in front of the Brooklyn Museum. 12'5" past the trailing (W) edge of the storm drain on the runners' left (S side of the road) and 18'11" before (E of) the silver L.P. (also on the runners' left).

15K: [40.672420, -73.968905](#) | On Flatbush Ave, just after (S of) the turn from Eastern Pkwy back onto Flatbush Ave. Even with the leading (N) edge of the steps to the Brooklyn Public Library (on the runners' left) and 2 feet before (N of) speed camera #B055483 (also on the runners' left).

Mile 10: [40.663637, -73.962875](#) | On Flatbush Ave, just past (S of) the Willink entrance to Prospect Park and before the right turn from Flatbush Ave onto Ocean Ave. Even with black L.P. #N-146 (small black numbering), which is on the runners' far right (towards the benches).

Mile 11: [40.659973, -73.963861](#) | On East Dr, just before (S of) the Lincoln Road/E Lake Dr entrance to Prospect Park. 36'6" before (S of) the traffic signal on the SW side of said intersection (i.e., the leading edge of the intersection and on the runners' left).

Mile 12: [40.670048, -73.971108](#) | On West Drive, 4'7" past (S of) the black ornamental L.P. #S2-13 on the runners' right. Said L.P. has a yellow and black "Crosswalk Ahead" sign affixed to it. 9'2" before (N of) the black fire hydrant on the runners' left.

20K: [40.664389, -73.973748](#) | On West Dr, 35'7" past (S of) the traffic signal on the runners' right. Near the trailing (S) side of the crosswalk and just past the water fountain. 22'9" past silver L.P. #T210 (on the runners' left).

800 m to go: [40.662619, -73.976347](#) | On West Dr, 20'8" before (NE of) the leading (NE) edge of the metal utility box in the road (on the runners' left) and 33'10" before silver L.P. #F124 (also on the runners' left).

400 m to go: [40.660162, -73.975767](#) | On West Dr, even with the leading (NW) edge of the metal utility box in the road on the runners' left. 4'6" before (NW of) the ornamental black traffic signal with the green box labeled "Post 7" affixed to it.

200 m to go: [40.659060, -73.973875](#) | On West Dr, just before (NW of) Center Dr. 50 feet before (NW of) silver L.P. #E226 (on the runners' right) and 78'4" before Mile 13.

Mile 13: [40.658941, -73.973650](#) | On West Dr, just before (NW of) Center Dr. 28 feet after (SE of) silver L.P. #E226 (on the runners' right) and 17'8" before the leading (N) edge of the metal utility box in the road on the runners' left.

100 m to go: [40.658428, -73.973042](#) | On the curve connecting West Dr to Center Dr. 16'9" past (SE of) silver L.P. #E248 on the runners' left. Said L.P. has a "Do Not Enter" sign affixed to it.

FINISH: [40.658767, -73.971920](#) | On Center Dr, shortly after the turn from West Dr onto Center Dr. Approximately 5 feet past (NE of) the trailing (NE) edge of the first asphalt path on the runners' right after said turn. Marked with a MagNail in the center of the road. MagNail is 24'10" W of (measured directly) the closest edge of the silver L.P. on the runners' right (first L.P. past the first asphalt path on the runners' right). MagNail is 85'5" SW of (measured directly) the closest edge of the black fire hydrant (also on the runners' right). Please see the Finish Detail Diagram.