



WA & AIMS Certified
USA-2023-329
Certification Expires Dec 31/2028



USATF Certificate
NY23093DNB
Effective: 11/13/2023
Through: 12/31/2033

NYCRUNS Go Nuts for Donuts 10K

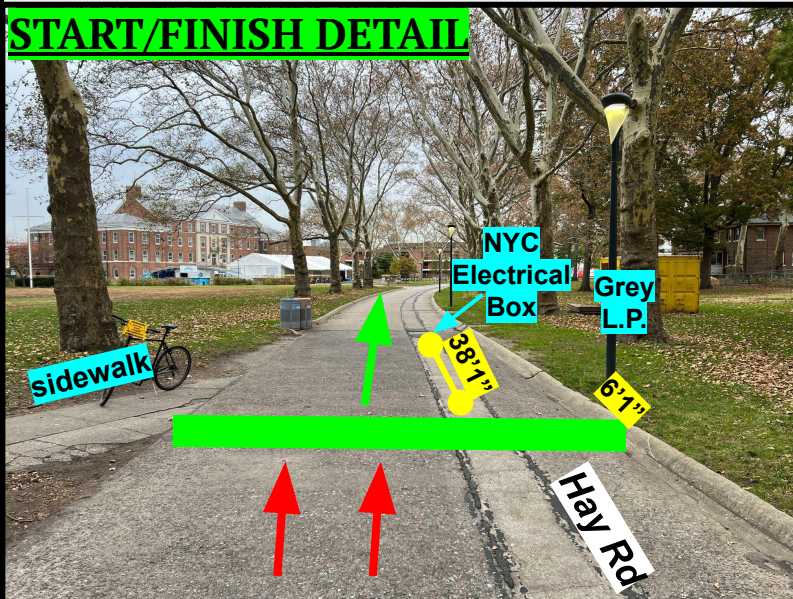
Governors Island | New York, NY

Measured by Matthew Slocum, WA-B
13 October + 10 November 2023
precisioncoursedesign@gmail.com

START/FINISH: [40.690550, -74.018465](#) | On Hay Rd, midway between Clayton Rd and Wheeler Ave. Even with the leading (S) edge of the intersection with the sidewalk on the left (W) side. This sidewalk is past (NW of) the main entrance to Liggett Hall. 6'1" before (SE of) the unmarked grey light pole (L.P.) on the right (E) side. 38'1" before (SE of) the leading (S) edge of the metal NYC Electrical box in the road.

Turnaround Point: [40.690269, -74.021950](#) | On Craig Rd N, 8'2" before (SW of) the leading (SW) edge of the metal WSNY utility box in the road on the right (SE) side. 14'5" after (NE of) the leading (SW) edge of the General Foundries Inc storm drain on the right (SE) side of the road.

START/FINISH DETAIL



This is a double loop course.

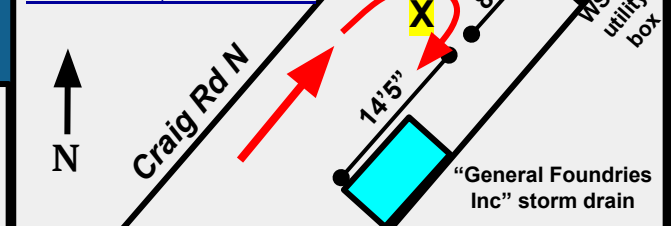
See Supplemental Pages for Intermediate Splits

Magenta Arrow = Start Only
Red Arrows = Both Loops
Blue Arrow = transition from Loop 1 to Loop 2
Black Arrow = Finish Only



Turnaround Detail

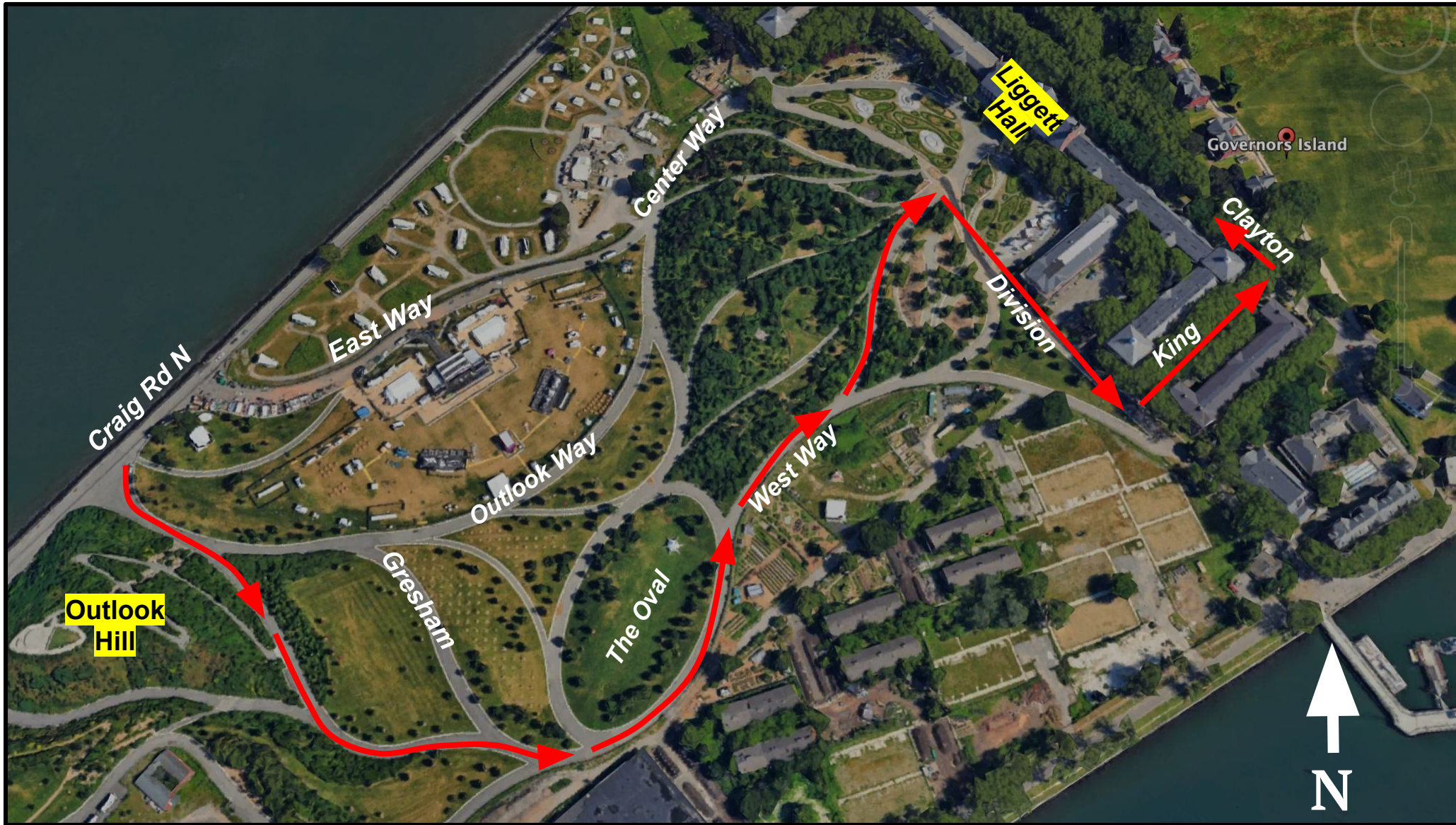
[40.690269, -74.021950](#)



This course was measured using the full width of the road and the shortest possible route

NYCRUNS Go Nuts for Donuts 10K

Supplemental Satellite Imagery Detail



NYCRUNS Go Nuts for Donuts 10K

Intermediate Splits

START/FINISH: [40.690550, -74.018465](#) | On Hay Rd, roughly midway between Clayton Rd and Wheeler Ave. Even with the leading (southern) edge of the intersection with the diagonal sidewalk on the left (W) side. This sidewalk is past (NW of) the main entrance to Liggett Hall. 6'1" before (SE of) the unmarked grey light pole (L.P.) on the right (E) side. 38'1" before (SE of) the leading (S) edge of the metal *NYC Electrical* box in the road.

TURNAROUND POINT: (*same location for both loops*) [40.690269, -74.021950](#) | On Craig Rd N, 8'2" before (SW of) the leading (SW) edge of the metal *WSNY* utility box in the road on the right (SE) side. 14'5" after (NE of) the leading (SW) edge of the *General Foundries Inc* storm drain on the right (SE) side of the road.

Mile 1: [40.687578, -74.014485](#) | On Kimmel Road, in the center of the intersection with Comfort Rd (which is a diagonal path on the right (NW) side of Kimmel just after (SW of) Evans/Barry Rd). Four feet after (SW of) the trailing (SW) edge of the *NYC Sewer* manhole cover. This is the southernmost manhole cover in the group of three.

Mile 2: [40.688611, -74.023774](#) | On Craig Rd N, before (SW of) the turnaround point. Near the trailing (N) end of the third structure N of East Way in *Collective Retreats*. (Please note that Google Maps does not reflect the current layout of structures). 89 feet before (SW of) the black fire hydrant on the right (E) side, which is next to the *WSNY* metal utility box.

Mile 3: [40.688913, -74.017455](#) | On Clayton Rd, just after (NW of) the turn from King Ave. Midway between the first set of double doors and the second set of double doors (both white) in the building on the left (SW) side after the turn from King. 4'6" before (SE of) the *NYC Electrical* box (also on the left).

Mile 4: [40.688384, -74.013141](#) | On Kimmel Rd, during Loop 2. 6'6" before (NE of) the manhole cover in the center of the road. 26 feet before (NE of) the black fire hydrant on the right (NW) side, which is next to the small, metal *WSNY* utility box in the road.

Mile 5: [40.687591, -74.024837](#) | On Craig Rd N, during Loop 2. Near the center of the intersection that is just past (N of) of Outlook Hill (intersection is an extension of Outlook Way). Two feet before (SW of) the first (southernmost) manhole cover in the intersection. Said manhole is also the closest manhole to the water (on the left (W) side).

Mile 6: [40.688036, -74.018128](#) | On King Ave, one foot before (SW of) the leading (SW) edge of the manhole cover at the SW corner of the intersection with Division Rd (during Loop 2).