

NYCRUNS Haunted Island 10K

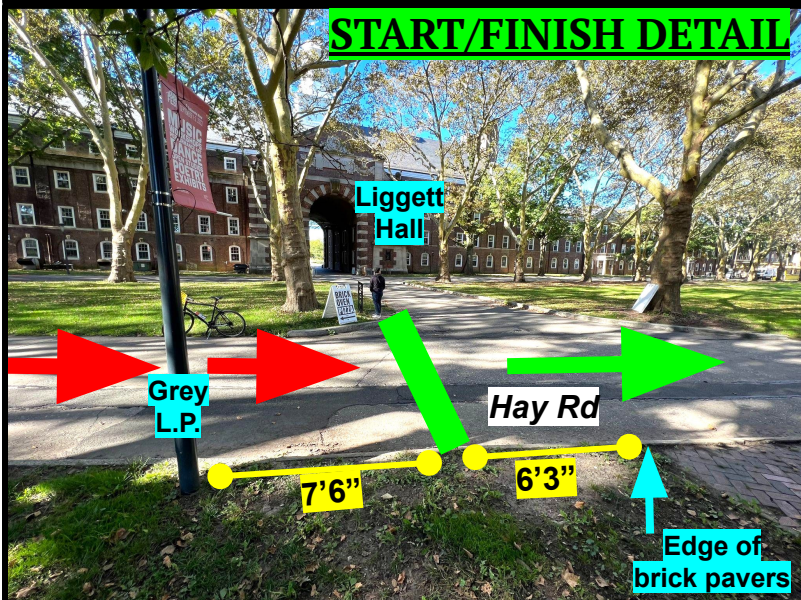
Governors Island | New York, NY

Measured by Matthew Slocum, WA-B | 13 October 2023 | precisioncoursedesign@gmail.com

This course was measured using the full width of the road and the Shortest Possible Route.

START/FINISH: [40.68991, -74.01813](#) | On Hay Rd, at the NE side of the intersecting road which runs directly to Liggett Hall. At the crack in the pavement on the right (NE) side, which is 7'6" past (NW of) the trailing (NW) edge of the unmarked grey Light Pole (L.P.) on the same side and 6'3" before the leading (SE) edge of the brick pavers (also on the right).

Turnaround Point: [40.690269, -74.021950](#) | On Craig Rd N, 8'2" before (SW of) the leading (SW) edge of the metal "WSNY" utility box in the road on the right (SE) side. 14'5" after (NE of) the leading (SW) edge of the "General Foundries Inc" storm drain on the right (SE) side of the road.



This is a double loop course.

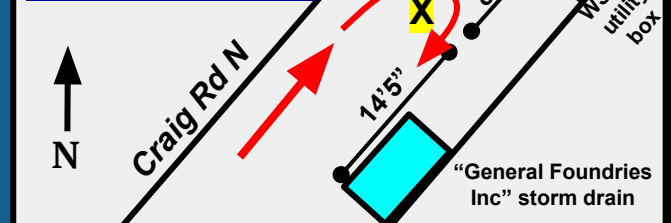
See Supplemental Pages for Intermediate Splits

Magenta Arrows = Start Only
Red Arrows = Both Loops
Blue Arrow = transition from Loop 1 to Loop 2
Black Arrow = Finish Only



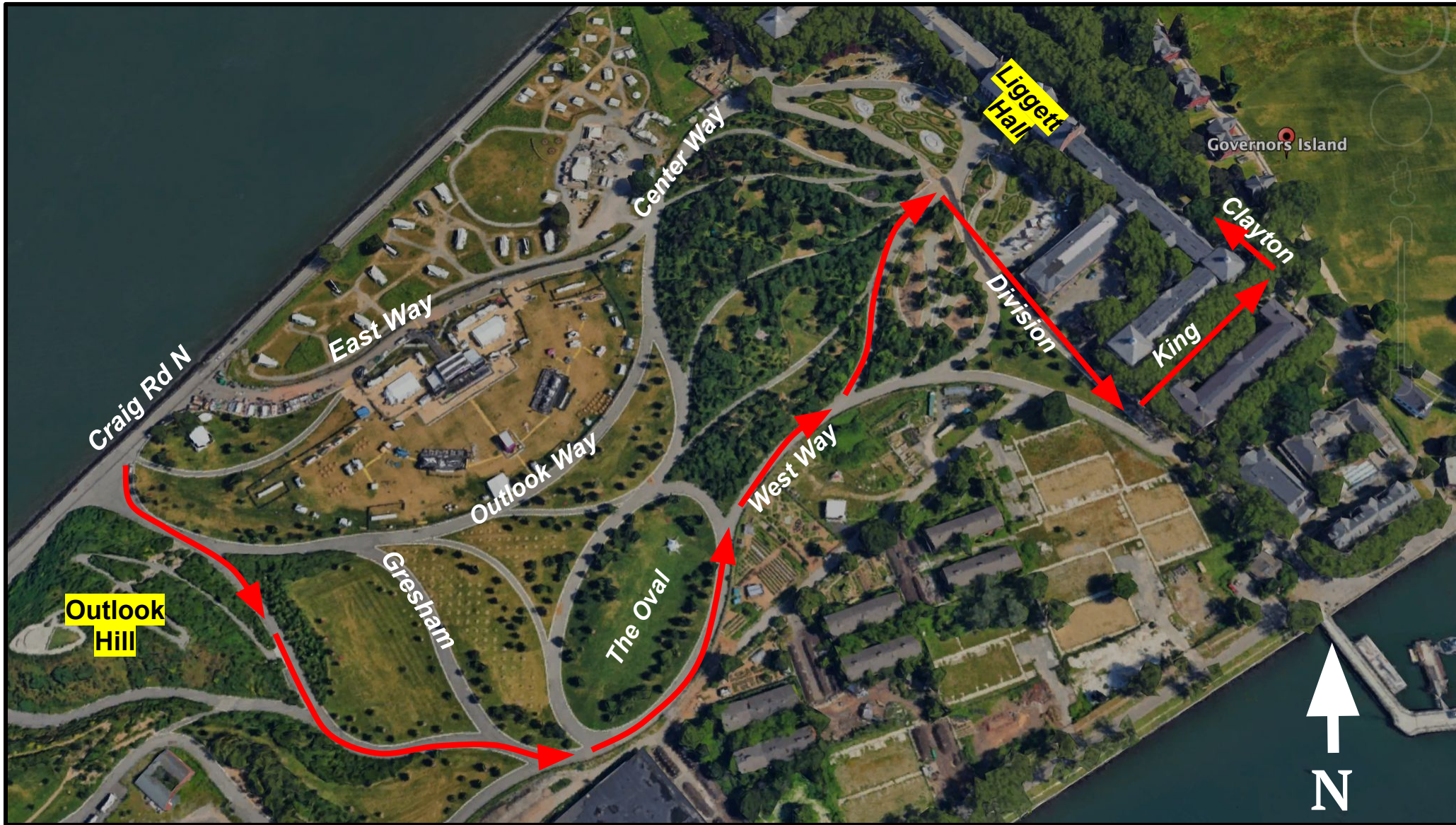
Turnaround Detail

[40.690269, -74.021950](#)



NYCRUNS Haunted Island 10K

Supplemental Satellite Imagery Detail



NYCRUNS Haunted Island 10K

Intermediate Splits

START/FINISH: [40.68991, -74.01813](#) | On Hay Rd, at the NE side of the intersecting road which runs directly to Liggett Hall. At the crack in the pavement on the right (NE) side, which is 7'6" past (NW of) the trailing (NW) edge of the unmarked grey LP on the same side and 6'3" before the leading (SE) edge of the brick pavers (also on the right).

TURNAROUND POINT: (*same location for both loops*) [40.690269, -74.021950](#) | On Craig Rd N, 8'2" before (SW of) the leading (SW) edge of the metal "WSNY" utility box in the road on the right (SE) side. 14'5" after (NE of) the leading (SW) edge of the "General Foundries Inc" storm drain on the right (SE) side of the road.

Mile 1: [40.68794, -74.01373](#) | On Kimmel Rd, midway between the doorways for *Bldg 12 Section F* and *Bldg 12 Section E*. Even with the trailing (SW) edge of the tree on the right (NW) side.

Mile 2: [40.688019, -74.024329](#) | On Craig Rd N, before (SW of) the turnaround point. Near the SW part of the intersection with East Way. Even with the trailing (NE) edge of the second (northernmost) red bench (of the pair) on the left (NW) side of Craig Rd N. 21'4" before (SW of) the leading (SW) edge of the small, square WSNY metal utility box in the road on the right (in the SE part of the intersection with East Way).

Mile 3: [40.68839, -74.0175](#) | On King Ave, just past (N of) the main entrance to *Bldg M* on the left (W) side. 17'4" past (N of) the trailing (N edge) of the northernmost cement opening between the curb and the sidewalk on the left (W) side.

Mile 4: [40.688990, -74.012698](#) | On Kimmel Rd, during Loop 2. Even with the leading (NE) edge of the walkway to the entrance of *Bldg 12 Section P* on the right (W) side. 43'3" after (SW of) the trailing edge (SW) edge of the storm drain on the right (W) side.

Mile 5: [40.68701, -74.02541](#) | On Craig Rd N, during Loop 2. Past (NE of) the intersections with Absecon Rd and Gresham Rd. Next to Outlook Hill. 51'9" after (NE of) the trailing edge (NE) edge of the NYC sewer manhole near the bike rack on the right (E) side of the road near the N side of the intersection with Gresham.

Mile 6: [40.688531, -74.018703](#) | On Division Rd, during Loop 2. Ten feet after (SE of) the center of the front door for the building on the left (N side of Division) on the E side of the intersection with Play Way.

